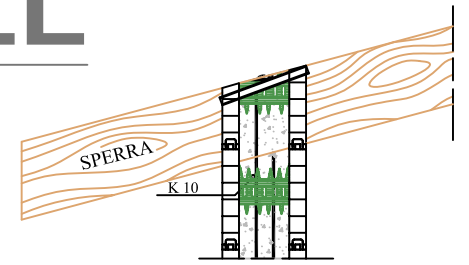
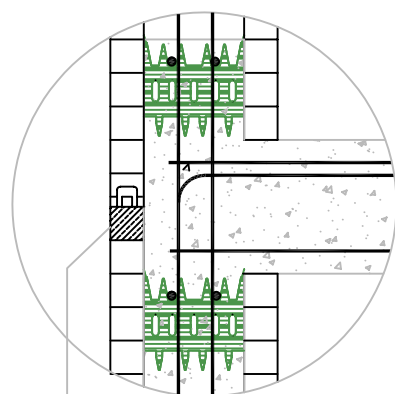
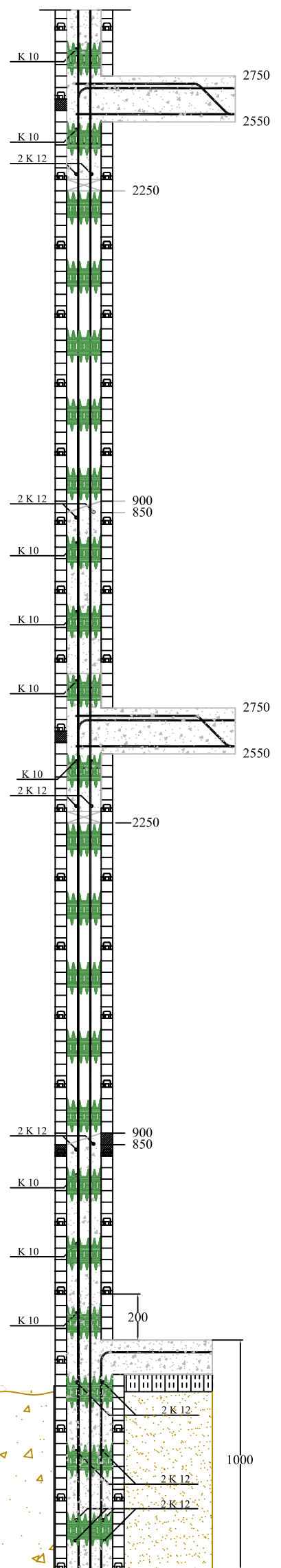


# 2-HÆÐA HÚS

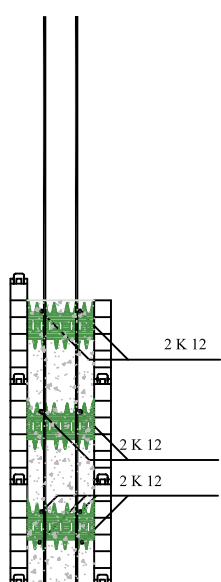
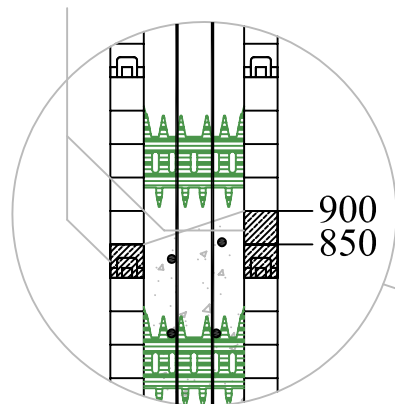
## VM-300/200 SÖKKULL



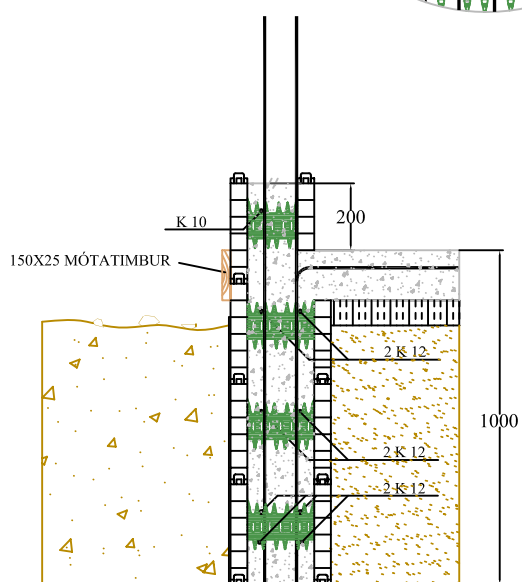
- ① Sökkull VM300/200 (3 neðstu mótin).
- ② Sökkull og gólfplata ásamt neðsta veggmóti
- ③ Veggur m/ steyptri loftplötu
- ④ Veggur m/ þaksperrum



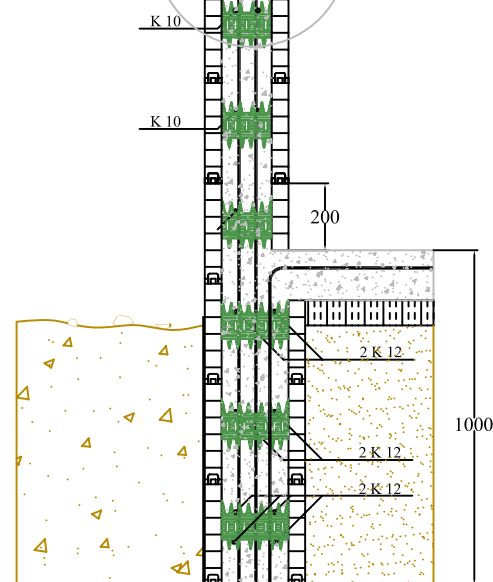
Afskurður fyrir steiptum plötum notast sem uppfylling inn í gluggagöt og sem hækkun milli hæða.



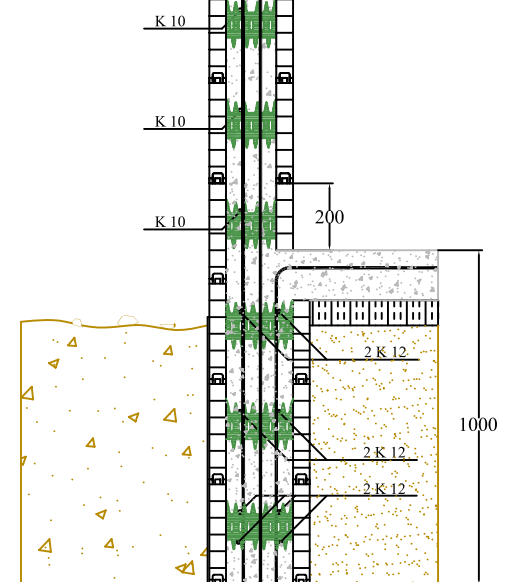
①



②



③



④