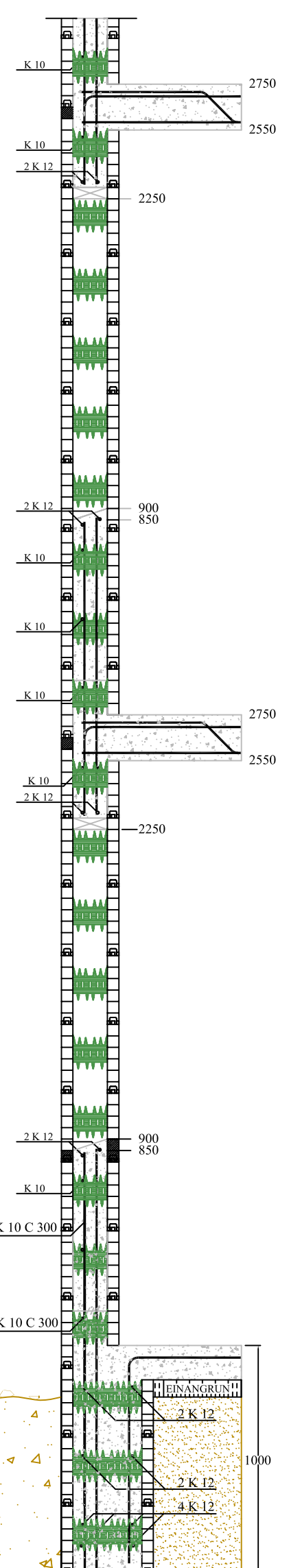
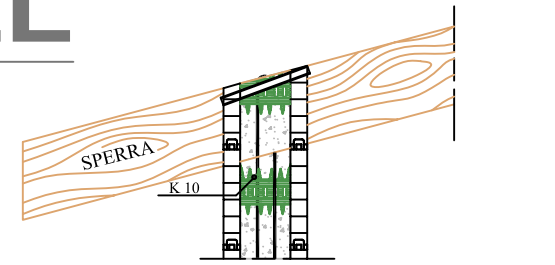
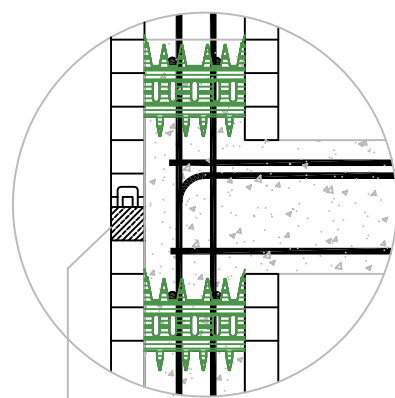


2-HÆÐA HÚS

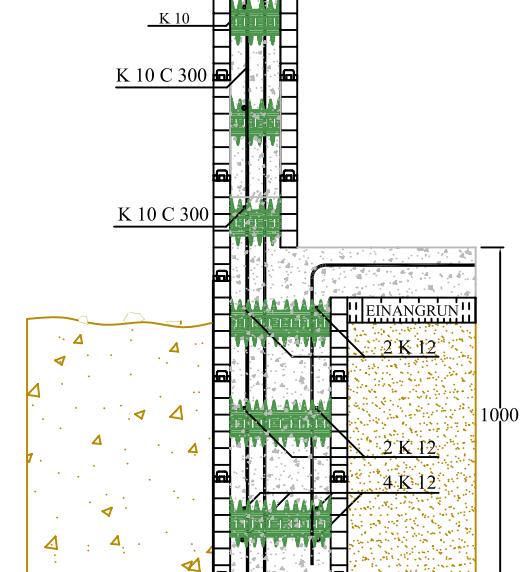
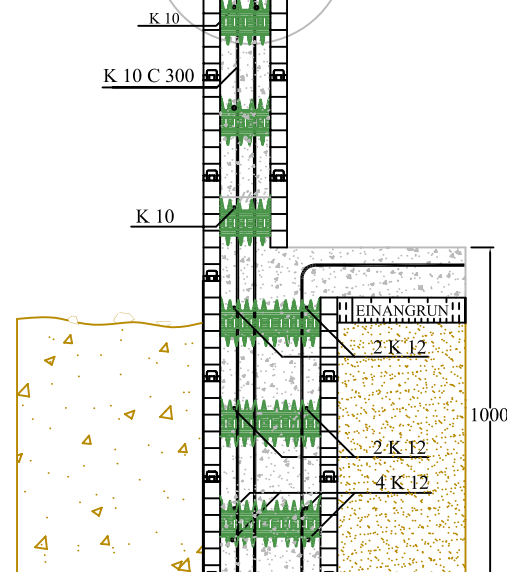
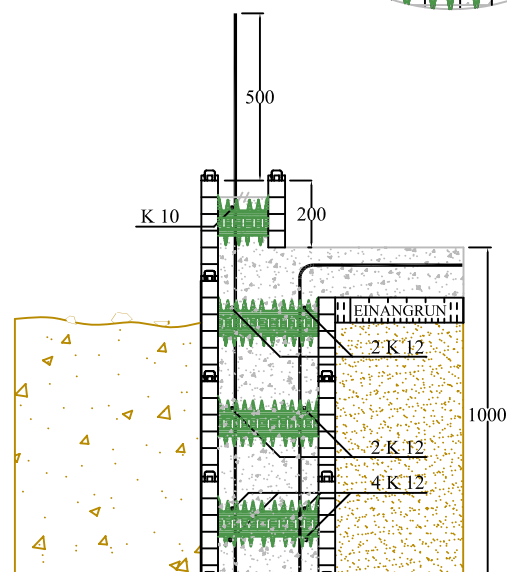
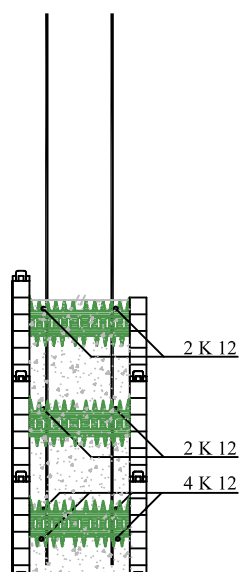
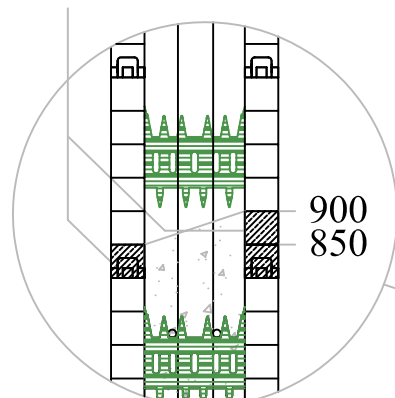
VM-400/300 SÖKKULL



- ① Sökkull VM400/300 (3 neðstu mótin).
- ② Sökkull og gólfplata ásamt neðsta veggmóti
- ③ Veggur m/steyptri loftplötu
- ④ Veggur, tvær hæðir og þaksperrur



Afskurður fyrir steiptum plötum notast sem uppfylling inn í gluggagöt og sem hækkun milli hæða.



①

②

③

④