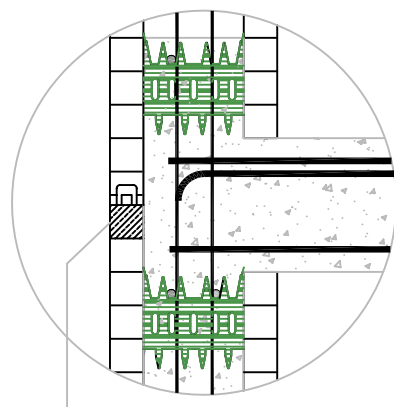
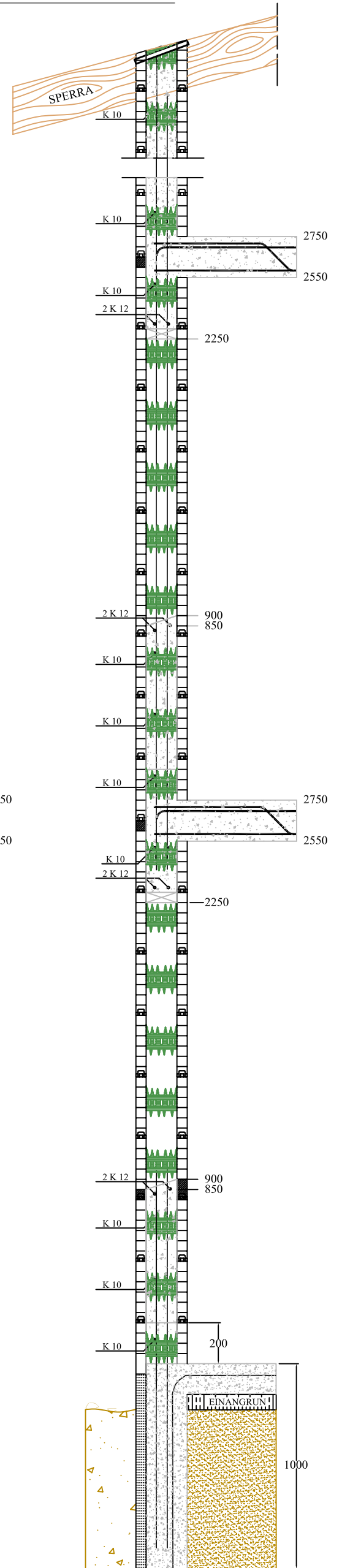


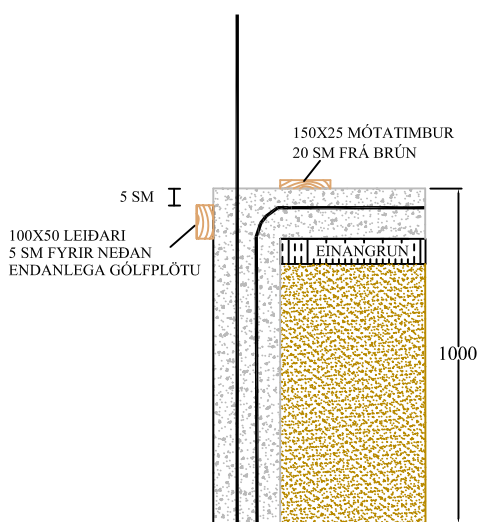
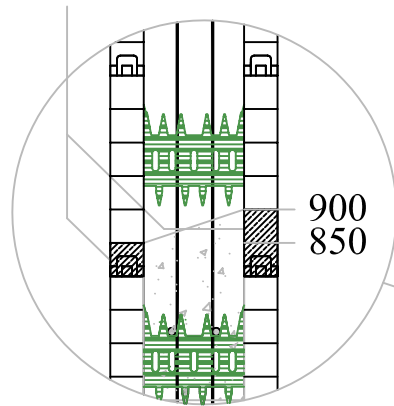
# 2-HÆÐA HÚS

## HEFÐBUNDINN SÖKKULL

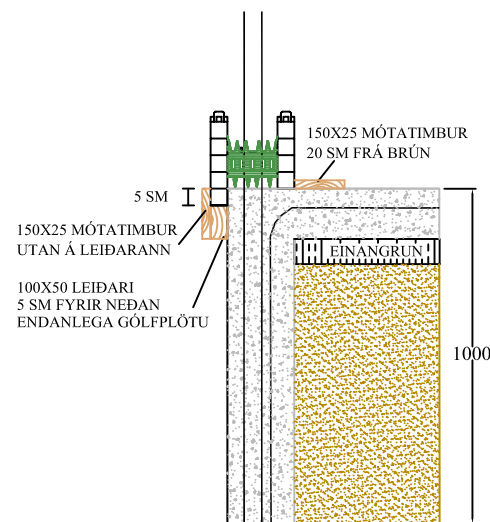
- ① Sökkul m/leiðurum
- ② Varmamót stífað með leiðurum
- ③ Veggur m/steyptri loftplötu
- ④ Veggur, tvær hæðir m/þaksperrum



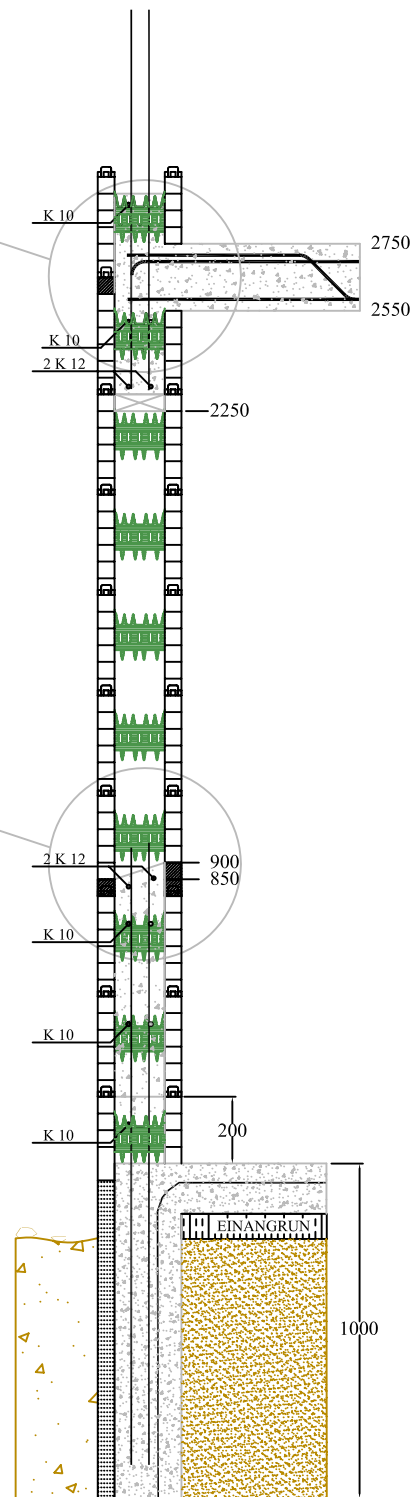
Afskurður fyrir steypum plötum notast sem uppfylling inn í gluggagöt og sem hækkun milli hæða.



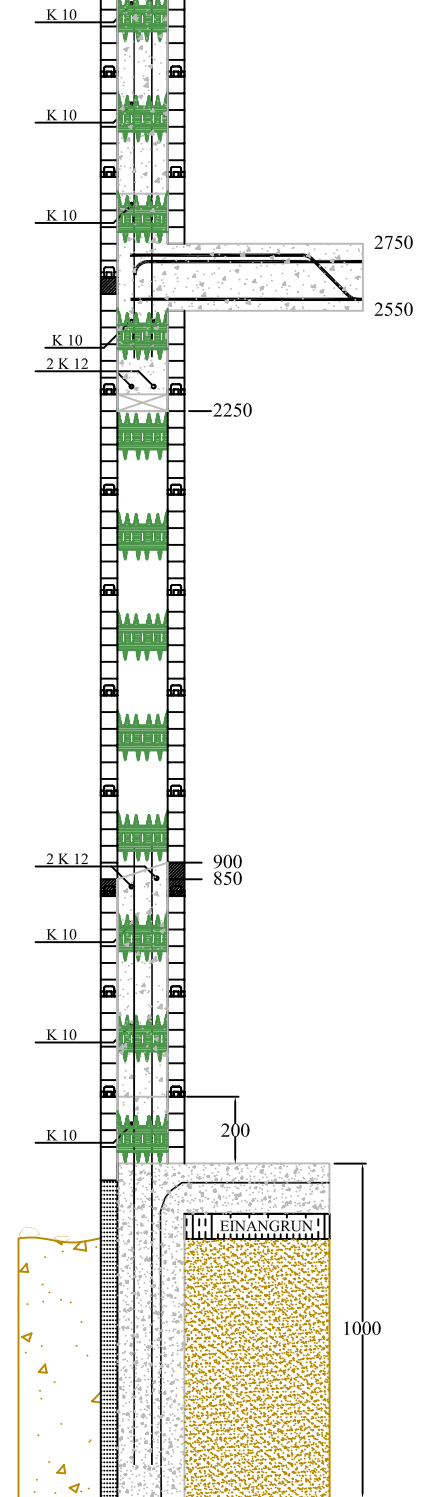
①



②



③



④